

# MARKET DISTRICT MULTI-PURPOSE STORMWATER PROJECT INFRASTRUCTURE ENGINEERING

Project Update – Preliminary Engineering  
October 2020

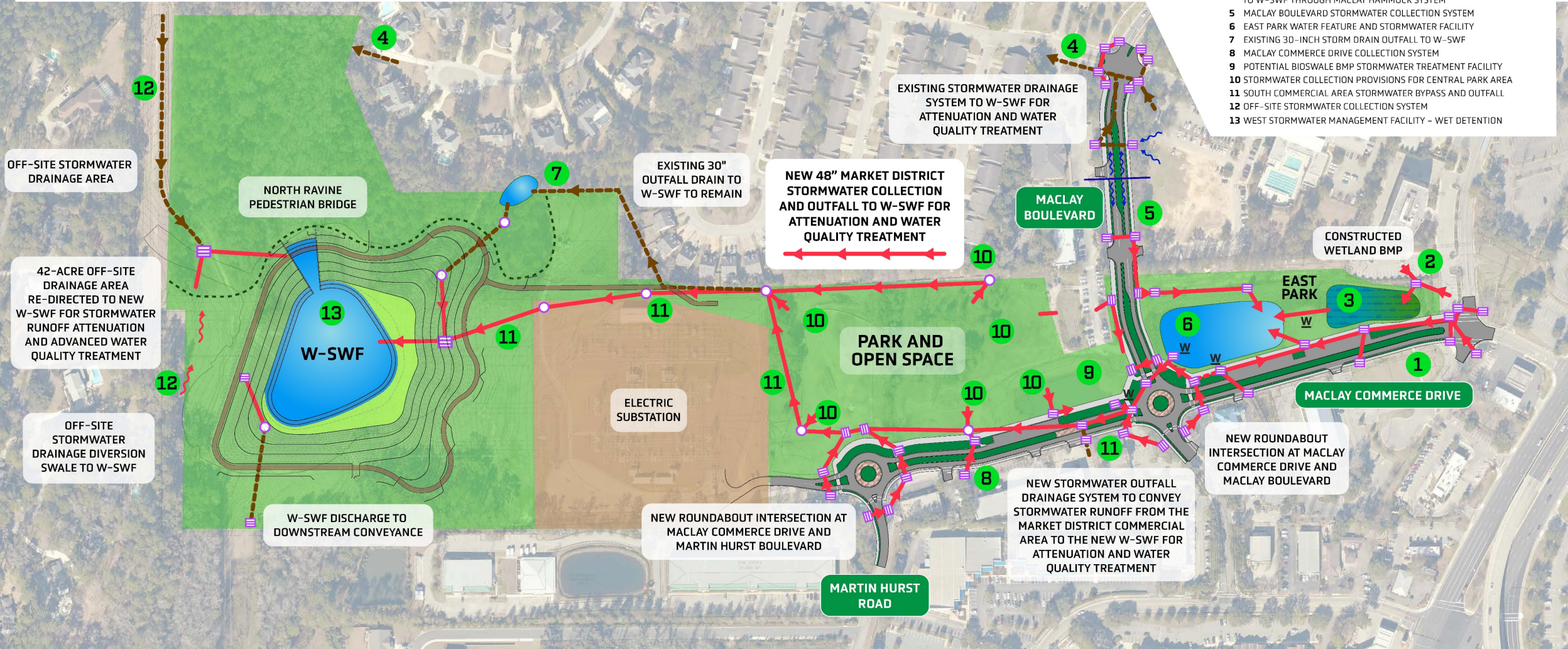


# SCHEMATIC PLAN

## PROJECT STORMWATER MANAGEMENT SYSTEM MARKET DISTRICT MULTI-PURPOSE STORMWATER PROJECT

### SCHEMATIC STORMWATER PLAN COMPONENTS

- 1 MACLAY COMMERCE DRIVE COLLECTION SYSTEM
- 2 OFF-SITE INVESTAR PROPERTY COLLECTION SYSTEM
- 3 CONSTRUCTED WETLANDS BMP STORMWATER FACILITY
- 4 MACLAY BOULEVARD INTERSECTION COLLECTION SYSTEM AND OUTFALL TO W-SWF THROUGH MACLAY HAMMOCK SYSTEM
- 5 MACLAY BOULEVARD STORMWATER COLLECTION SYSTEM
- 6 EAST PARK WATER FEATURE AND STORMWATER FACILITY
- 7 EXISTING 30-INCH STORM DRAIN OUTFALL TO W-SWF
- 8 MACLAY COMMERCE DRIVE COLLECTION SYSTEM
- 9 POTENTIAL BIOSWALE BMP STORMWATER TREATMENT FACILITY
- 10 STORMWATER COLLECTION PROVISIONS FOR CENTRAL PARK AREA
- 11 SOUTH COMMERCIAL AREA STORMWATER BYPASS AND OUTFALL
- 12 OFF-SITE STORMWATER COLLECTION SYSTEM
- 13 WEST STORMWATER MANAGEMENT FACILITY - WET DETENTION





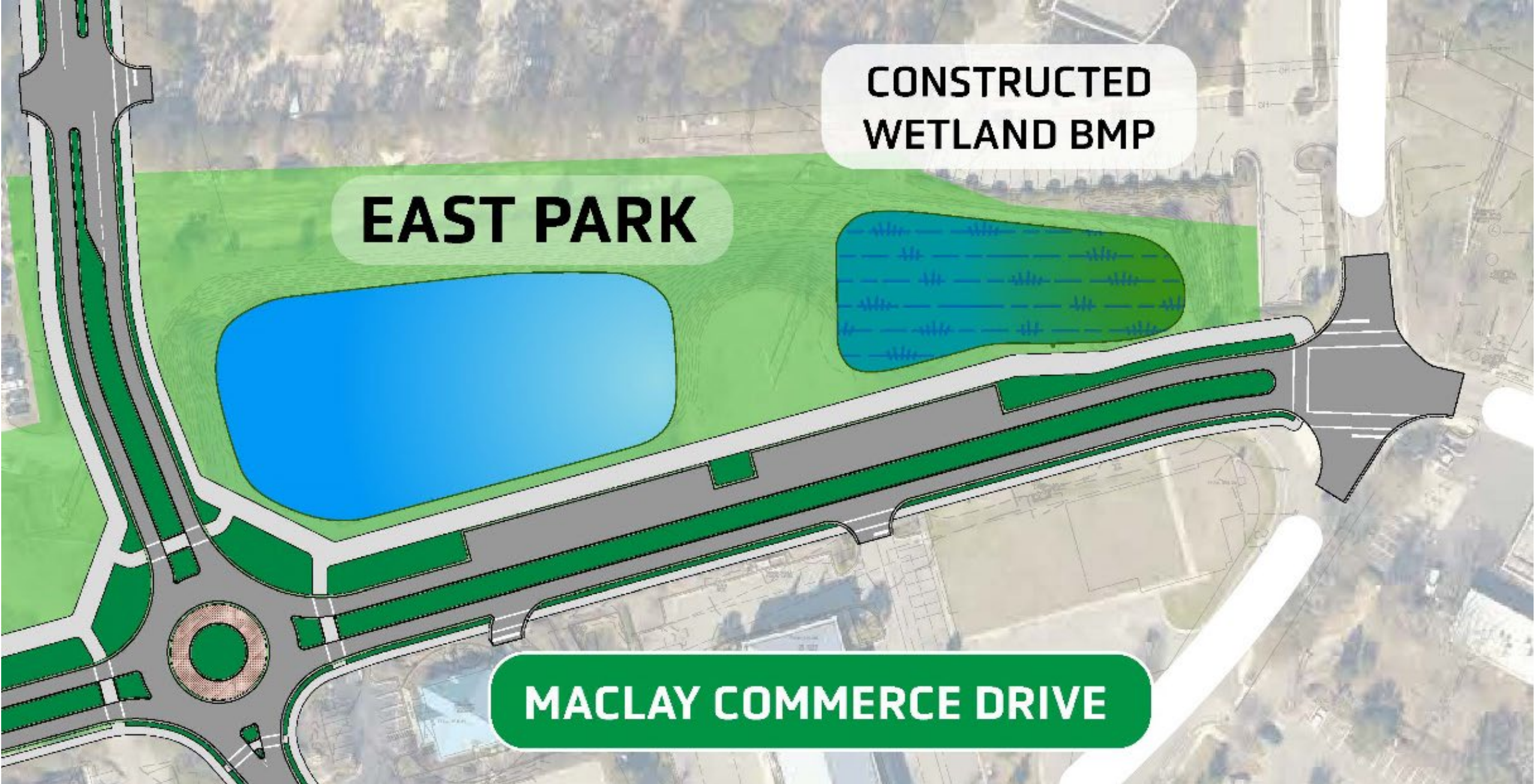
**NATURAL  
AREA  
BOUNDARY**

**WEST  
POND**

**ELECTRIC  
SUBSTATION**







**CONSTRUCTED  
WETLAND BMP**

**EAST PARK**

**MACLAY COMMERCE DRIVE**









**SAGE RESTAURANT**

**CONSTRUCTED WETLAND BMP**

**EAST PARK**

**PARK AND OPEN SPACE**

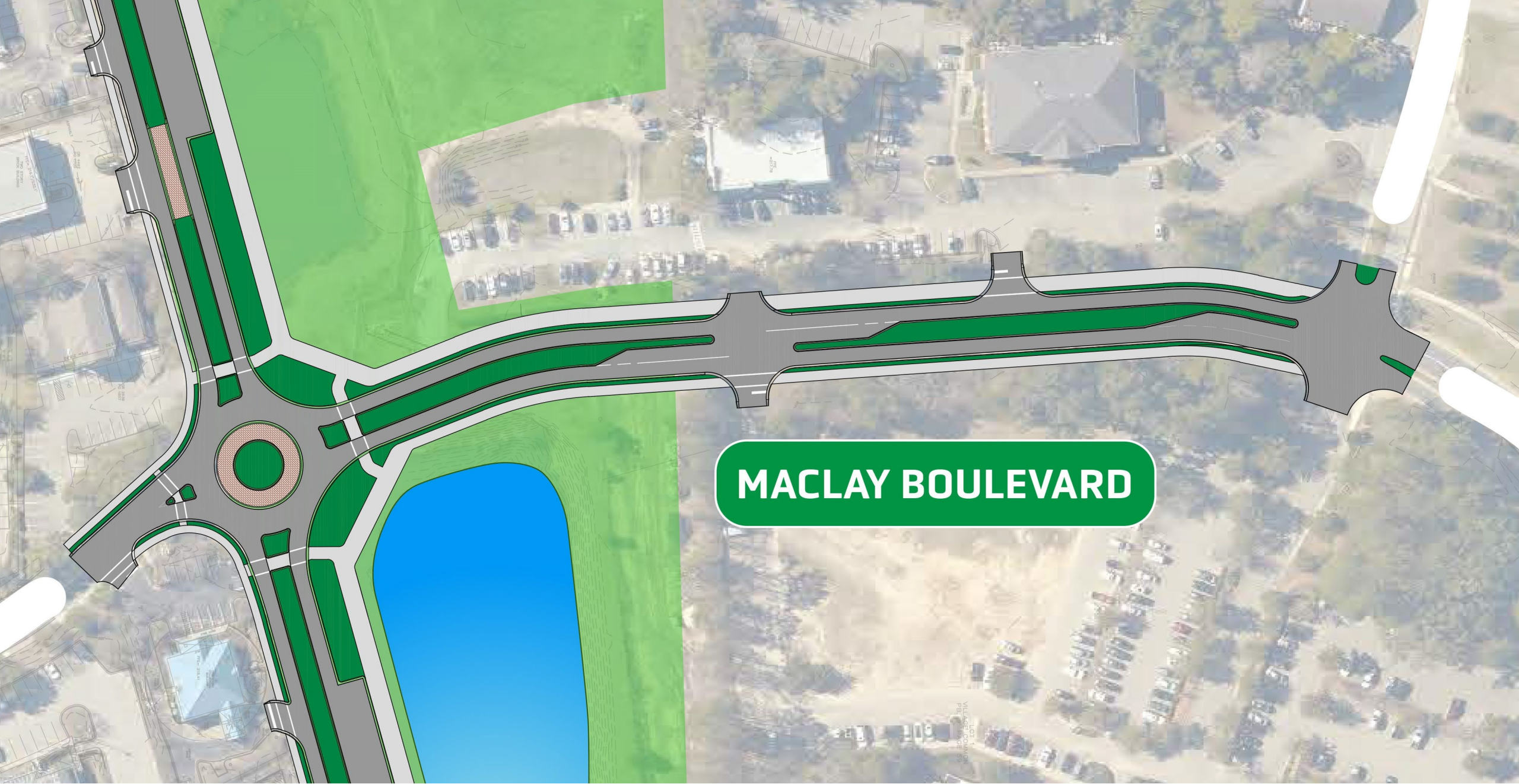
**MACLAY COMMERCE DRIVE**

**MARTIN HURST ROAD**

MacLay Blvd

Thom





**MACLAY BOULEVARD**



